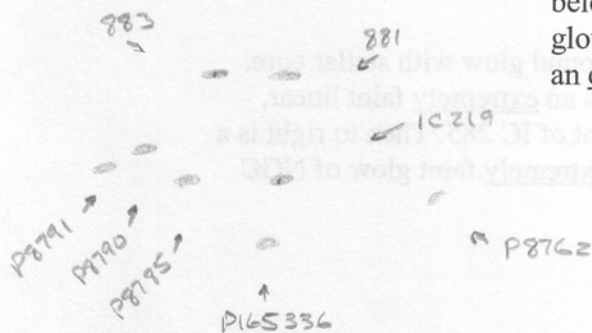


Saturday January 5, 2013

Arrived at Little Thompson Observatory to use their new 24 inch f/4 telescope. This is the one that was used on Mt. Wilson in the 1960s to find places for the Apollo astronauts to land.

37 degrees. Sky is clear. Seeing is good. Transparency OK.

NGC 1	6:38 PM	13mm (187x) – An <u>extremely</u> faint oval glow. Small. Hint of a hare brighter center area. Mag 13.6.
NGC 7680	6:46 PM	13mm – A small, oval, <u>very</u> faint glow with stellar core seen in center of glow once in a while. Mag 13.5.
NGC 1985	6:58 PM	13mm – A small round dim glow with <u>very</u> faint star in center of glow. Easy to see with direct vision. Mag 12.7.
IC 410	7:01 PM	13mm – A small, round very dim glow with extremely faint star see in center of glow once in a while.
NGC 1094	7:09 PM	13mm – An <u>extremely</u> faint, round, uniformly lit glow.
NGC 1153	7:13 PM	13mm – A small, tilted oval, very dim yet easy to see. Has hint of hare brighter, larger core.
NGC 955	7:19 PM	13mm – A long, slender glow. Faint. Has hare brighter, larger core in center.
NGC 881	7:27 PM	13mm – A small, <u>very</u> faint round glow with stellar core. N883, oval with very bright field star on glow. Then below these two that are near each other are 6 other galaxies a bit away and in a string. PGC 8791, PGC 8790 and PGC 8785 are tiny, round, uniformly lit glows. These three are together on left hand side of string and very near each other. Then to the right of these three and very near is IC 219, a faint round glow with star like core in center. Then below these 4 is PGC 165336, a <u>very</u> faint, smaller round glow. Then off to right of these 5 a bit away is PGC 8762, an <u>extremely</u> faint smudge of light.
NGC 883		
PGC 8791		
PGC 8790		
PGC 8785		
IC 219		
PGC 165336		
PGC 8762		



NGC 788 7:30 PM 13mm – A small, oval, uniformly lit, very faint glow.

NGC 790 7:31 PM 13mm – A small, oval glow with hint of a larger, hare brighter core seen once in a while.

NGC 850 7:34 PM 13mm – A small round glow. Very faint. Hint of stellar core.

NGC 863 7:37 PM 13mm – A very dim, oval glow with larger, hare brighter core in center of glow.

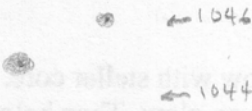
NGC 867 7:39 PM 13mm – An extremely faint oval-round glow. Maybe see a stellar core once in a while in center of glow.
(also known as NGC 875)

NGC 864 7:43 PM 13mm – A very faint, fat oval, uniformly lit glow.

NGC 827 7:45 PM 13mm – A small, very faint round glow with an extremely faint stellar core in center of glow seen once in a while.
NGC 840 Then above and to right and near is a much smaller round glow with brighter stellar core of NGC 840.

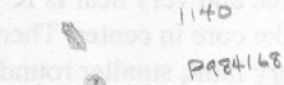


NGC 1046 7:48 PM 13mm – A small, round, very faint glow with a brighter core. Then above and to right and near is NGC 1044, a much smaller round glow, much dimmer (Mag 14.6) than 1046 with brighter core seen.

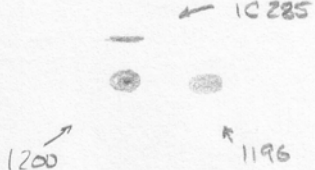




27 degrees. Sky Good. Transparency OK.

NGC 1140 7:53 PM 13mm – A nice tilted oval. Has brighter larger core. Then below and to right and near is a dimmer, round, tiny glow with stellar core of PGC 984168.



NGC 1200 7:56 PM 13mm – A small, brighter round glow with stellar core. Then above and very near is an extremely faint linear, uniformly lit smudge of light of IC 285. Then to right is a small, oval, uniformly lit, extremely faint glow of NGC 1196.



NGC 1208	8:00 PM	13mm – An <u>extremely</u> faint, cigar shaped smudge of light. Then below and to right is a round, small, <u>extremely</u> faint smudge of light of NGC 1214.
NGC 1214		
		
		
NGC 1242	8:03 PM	13mm – A small, oval, <u>extremely</u> faint smudge of light (Mag 14.4). Almost not there yet when move FOV around, my eye follows it.
NGC 1758	8:08 PM	13mm – A small, compact cluster of 6 stars of 3 magnitudes.
NGC 1975	8:22 PM	40mm – Around 3-4 stars is a glow that these stars light up.
NGC 1973	8:22 PM	40mm – Then above N1975 and to right is a couple of stars that light up the nebula glow around them.
NGC 1713	8:29 PM	13mm – A <u>very</u> faint, tilted oval, small, with hare brighter core.
NGC 2110	8:34 PM	13mm – A small roundish uniformly lit, <u>extremely</u> faint glow.
NGC 2333	8:39 PM	13mm – An <u>extremely</u> faint (Mag 14.2), roundish, small, smudge of light.
NGC 2435	8:45 PM	13mm – A <u>very</u> small tilted oval. <u>Very</u> faint. Hare brighter larger core seen.
NGC 2481	8:46 PM	13mm – A very small, tilted to linear glow. Has brighter larger core that is easily seen on halo glow.

M42 was awesome thru 40mm eyepiece.

8:49 PM. 25 degrees. Packing it up for the night. This is an incredible scope. Sky was good and in Cetus area, OK. Scope would work better if the sky was darker. Going to look into a UHC filter.

This is the very scope that was used on Mt. Wilson and I was using it to look at faint galaxies. Pretty awesome and I cannot believe I have the opportunity to use this magnificent scope again to play with.